

# ПРЕЛЮДИЯ № 2

Х. ВИЛЛА - ЛОБОС  
Редакция К. Хрусталева

Не спеша rit. a tempo

rit. a tempo

Шестиструнная  
гитара

rit. a tempo VII-----

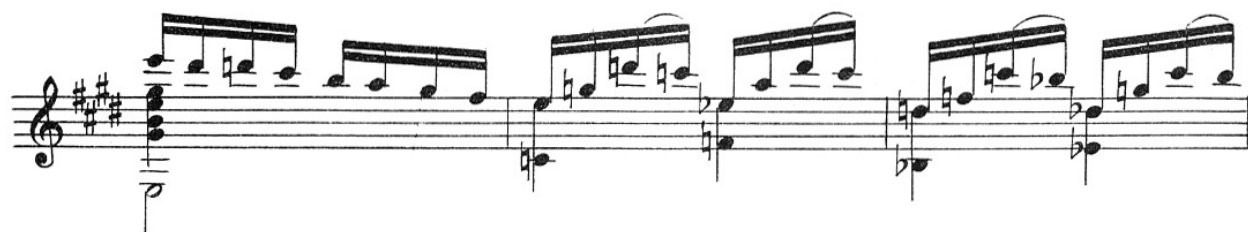
rit. a tempo

*leggiera*

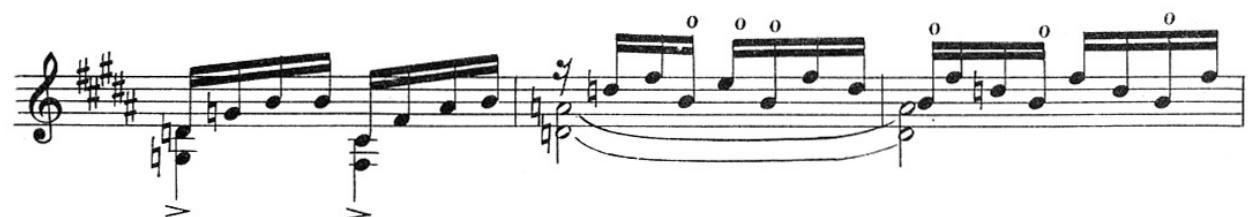
rit. a tempo

rit. a tempo

rit. a tempo



Более оживлённо



The first staff of music features a treble clef and a key signature of three sharps (F#, C#, G#). The melody is written in eighth notes with a slanted stem. The bass line consists of a long, low note with a fermata, followed by a few chords. A 'V' symbol is placed below the first bass note.

The second staff continues the melody in eighth notes. The bass line has several chords, some with fermatas, and a long note at the end.

The third staff shows the melody continuing. The bass line includes a long note with a fermata and several chords.

The fourth staff continues the piece. The bass line features several chords and a long note with a fermata.

The fifth staff shows the melody and bass line. The bass line has a long note with a fermata and several chords.

The sixth staff continues the music. The bass line includes a long note with a fermata and several chords.

The seventh and final staff on the page shows the melody and bass line. The bass line has several chords and a long note with a fermata.



Темп первый

rit. a tempo

rit. a tempo

VII

rit. a tempo

leggera

rit.

a tempo

rit. a tempo

First musical staff, treble clef, key signature of three sharps (F#, C#, G#). The melody consists of eighth and sixteenth notes, with a descending line in the second measure.

Second musical staff, treble clef, key signature of three sharps. The melody continues with eighth and sixteenth notes, featuring a descending line in the second measure.

Third musical staff, treble clef, key signature of three sharps. The melody continues with eighth and sixteenth notes, featuring a descending line in the second measure.

Fourth musical staff, treble clef, key signature of three sharps. The melody continues with eighth and sixteenth notes, featuring a descending line in the second measure.

Fifth musical staff, treble clef, key signature of three sharps. The melody continues with eighth and sixteenth notes, featuring a descending line in the second measure.

Sixth musical staff, treble clef, key signature of three sharps. The melody continues with eighth and sixteenth notes, ending with a double bar line and a fermata. A dynamic marking of *f* is present below the staff.